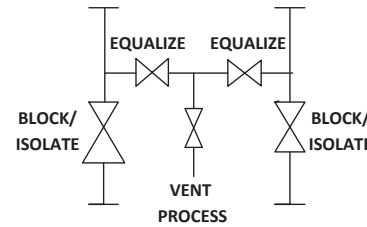
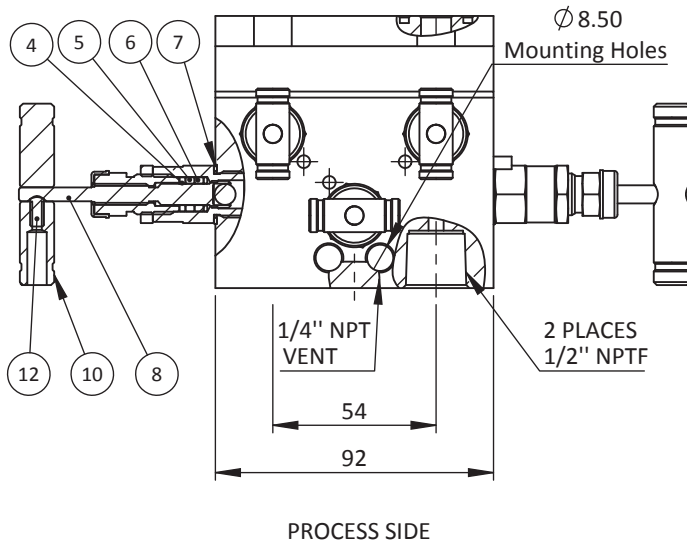


INSTRUMENT SIDE

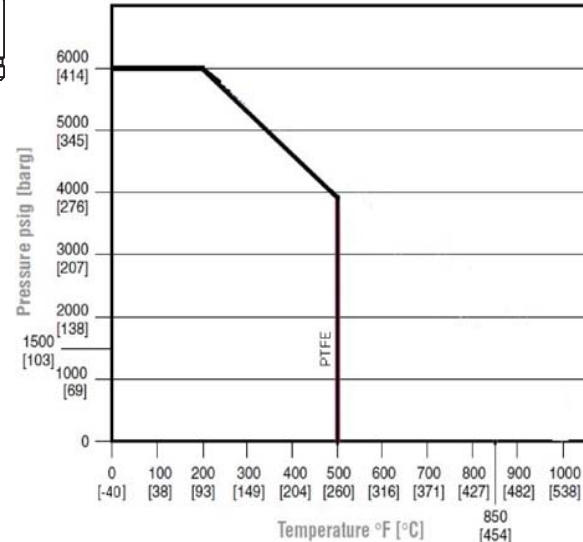
INSTRUMENT



SCHMATIC



PROCESS SIDE



ITEM NO.	PART NUMBER	DESCRIPTION	QTY.
1	BODY	ASTM A 479-316	1
2	GLAND BODY	ASTM A 479-316	2
3	RETAINER	ASTM A 479-316	2
4	BACKUP RING	DELTRIN	3
5	PACKING	TEFLON	4
6	WASHER	ASTM A 479-316	3
7	WASHER	ASTM A 479-316	3
8	SPINDLE.	ASTM A 479-316	2
9	PACKING NUT	ASTM A 479-316	3
10	HANDLE	SS	3
11	SMALL GLAND BODY	ASTM A 479-316	3
12	GRUB SCREW	SS	2
13	LOCK NUT	ASTM A 479-316	2
14	DUST CAP	PLASTIC	2
15	DOWEL PIN	SS	5

NOTES:-

- ALL DIMENSIONS ARE IN MM. UNLESS SPECIFIED.
- UNSPECIFIED GEN TOL. : ±0.5 MM MAX.
- UNSPECIFIED GEN ANG. TOL. : ±0.1° MAX.
- UNSPECIFIED ASLY. TOL. : ±2MM MAX.
- UNSPECIFIED TOL. FOR FORGING : ±2 MM.(IF APPLICABLE)

TITLE:- 5 VALVE MANIFOLD VALVE T TYPE PIPE TO FLANGE CONNECTION, 1/2"NPTF X 1/2"NPTF, 6000 PSI

DRN.	PS	SCALE - N.T.S	REV.	00
CHD.	SS	DATE - 23.03.18	PROJ.	
APPD.	DM	DRG.NO.- 5VM-SS-8-T-SG		



**PANAM ENGINEERS LTD**  
GUJARAT - INDIA

REV.	DESCRIPTION	DRN	CHD	APPD	DATE

SHEET  
1  
OF  
1