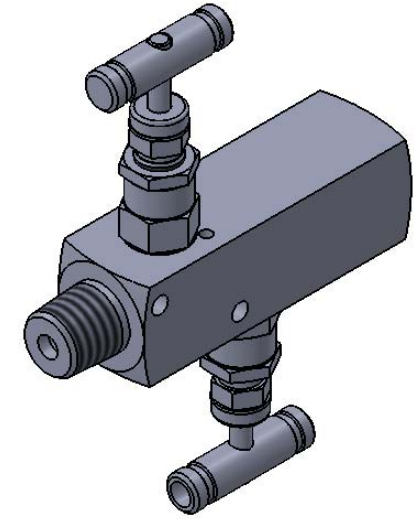


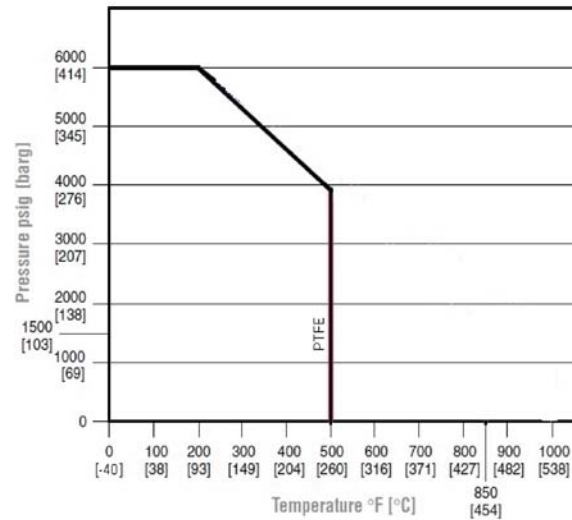
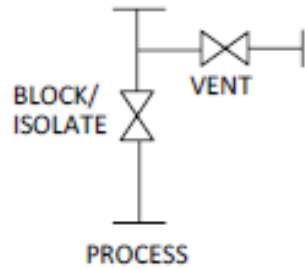
SECTION D-D  
SCALE 1 : 1.8



ITEM NO.	DESCRIPTION	MATERIAL	QTY.
1	MAIN BODY	ASTM A 479-316	1
2	GLAND BODY	ASTM A 479-316	2
3	RETAINER	ASTM A 479-316	2
4	BACKUP RING	DELRIN	2
5	PACKING	TEFLON	4
6	WASHER	ASTM A 479-316	2
7	LOCK NUT	ASTM A 479-316	2
8	GRUB SCREW	SS	2
9	HANDLE	SS	2
10	SPINDLE	ASTM A 479-316	2
12	DUST CAP	PLASTIC	2
13	NONROTATING BALL TIP	SS440C	2
14	DOWEL PIN	SS	2

**SCHMATIC**

**INSTRUMENT**



**NOTES:-**

- ALL DIMENSIONS ARE IN MM. UNLESS SPECIFIED.
- UNSPECIFIED GEN TOL. : ±0.5 MM MAX.
- UNSPECIFIED GEN ANG. TOL. : ±0.1° MAX.
- UNSPECIFIED ASLY. TOL. : ±2MM MAX.
- UNSPECIFIED TOL. FOR FORGING : ±2 MM.(IF APPLICABLE)

REV.	DESCRIPTION	DRN	CHD	APPD	DATE

TITLE:- 2 WAY MANIFOL REMOTE MOUNT, 1/2" NPTM X 1/2"NPTF,6000 PSI

DRN.	PS	SCALE -	N.T.S	REV.	00
CHD.	SS	DATE -	23.03.18	PROJ.	
APPD.	DM	DRG.NO.-	2VM-SS-8-RM		



**PANAM ENGINEERS LTD**  
GUJARAT - INDIA

SHEET  
1  
OF  
1