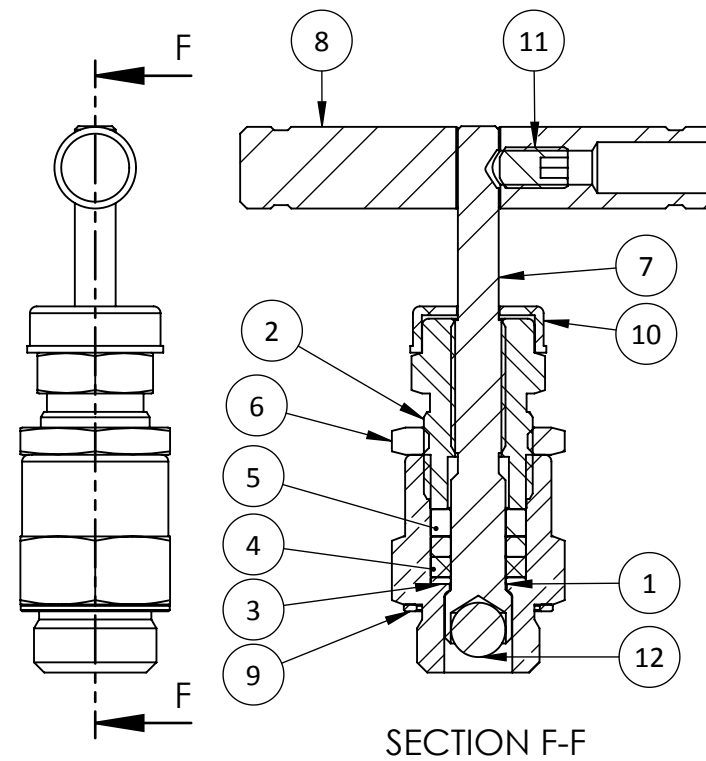
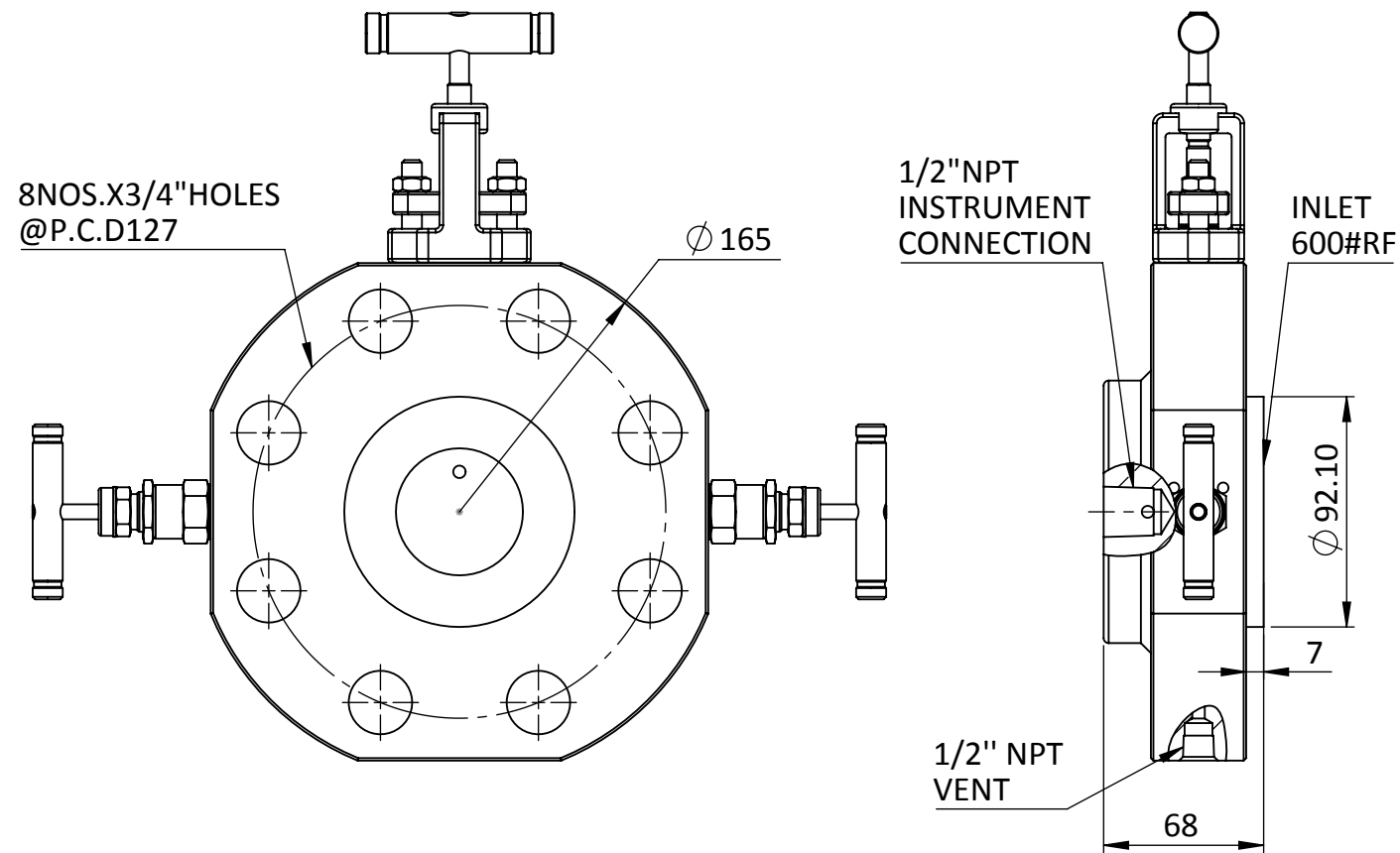


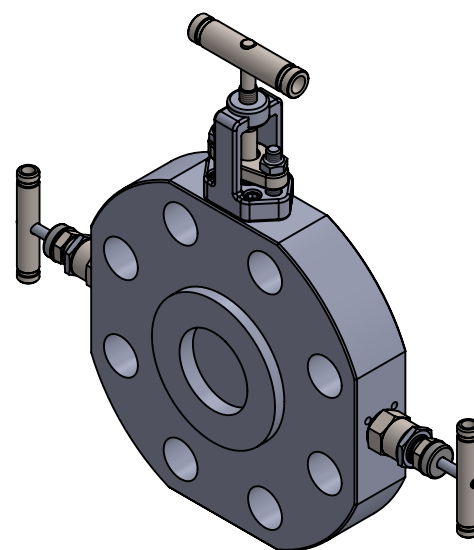
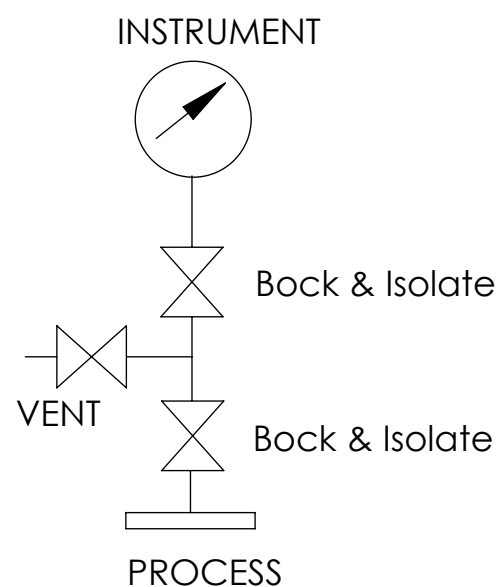
BLEED VALVE



ITEM NO.	PART NUMBER	DESCRIPTION	QTY.
1	GLAND BODY	ASTM A 479-316	2
2	RETAINER	ASTM A 479-316	1
3	PACKING	DELTRIN	2
4	PACKING	TEFLON	4
5	WASHER	ASTM A 479-316	2
6	LOCK NUT	ASTM A 479-316	2
7	SPINDLE	ASTM A 479-316	2
8	HANDLE	SS	1
9	WASHER	ASTM A 479-316	2
10	DUST CAP	PLASTIC	1
11	GRUB SCREW	SS	1
12	BALL TIP	SS440C	2

ITEM NO.	PART NAME	MATERIAL	QTY
01	BODY	ASTM A 182-F316	1

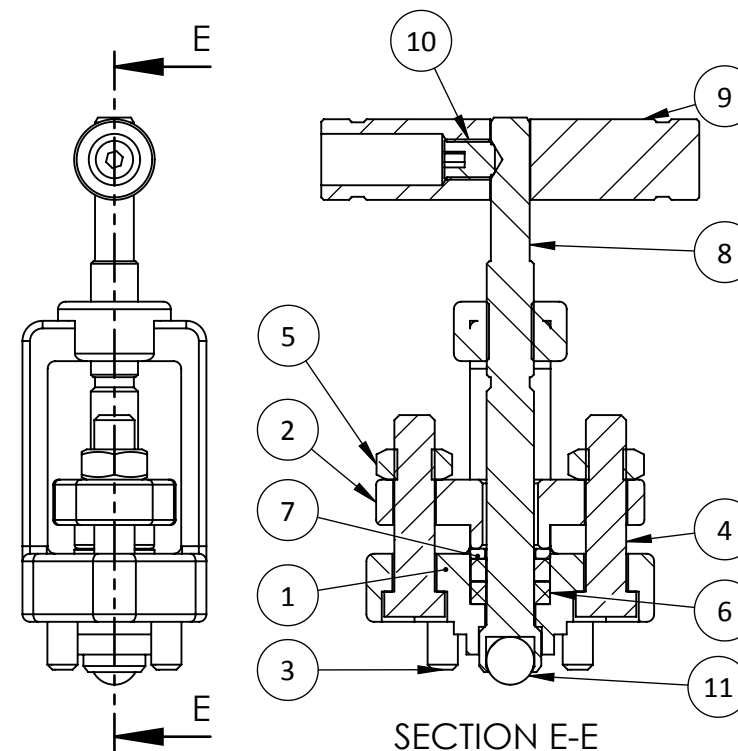
SCHEMATIC



NOTES:-

- ALL DIMENSIONS ARE IN MM. UNLESS SPECIFIED.
- UNSPECIFIED GEN TOL. : ±0.1 MM MAX.
- UNSPECIFIED GEN ANG. TOL. : ±0.1° MAX.
- UNSPECIFIED ASLY. TOL. : ±2MM MAX.
- UNSPECIFIED TOL. FOR FORGING : ±2 MM.(IF APPLICABLE)

ISOLATION VALVE



ITEM NO.	PART NUMBER	DESCRIPTION	QTY.
1	CASTING BONNET	CF8M	1
2	GLAND	CF8M	1
3	ALLEN BOLT	STD	4
4	HEX BOLT	ASTM A A93-Gr B8M	2
5	HEX NUT	ASTM A A94-Gr B8	2
6	PACKING	TEFLON	2
7	WASHER	ASTM A479-316	1
8	SPINDLE	ASTM A 479-316	1
9	HANDLE	SS	1
10	GRUB SCREW	SS	1
11	BALL TIP	SS440C	1

Pressure Test As Per API 598			
CLASS	Hydrostatic	Hydrostatic	Pneumatic
	SHELL	SEAT	L-P SEAT
600#	154 BAR	113 BAR	6-7 BAR

TITLE:- 2"X600# RF FLANGE X 1/2"NPT VENT MONOFLANGE DOUBLE BLOCK & BLEED VALVE

DRN.	SS	SCALE -	N.T.S	REV.	00
CHD.	DM	DATE -	02-09-2016	PROJ.	
APPD.	AS	DRG.NO.-	PDBB-OSY-SS-01-50-600-RF-8NF-8N-SG		



PANAM ENGINEERS LTD
GUJARAT - INDIA

SHEET
2
OF
2