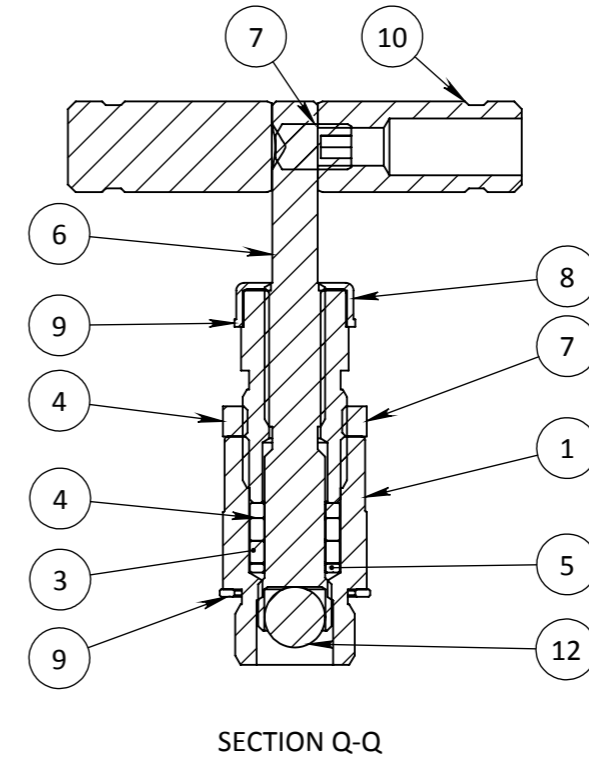
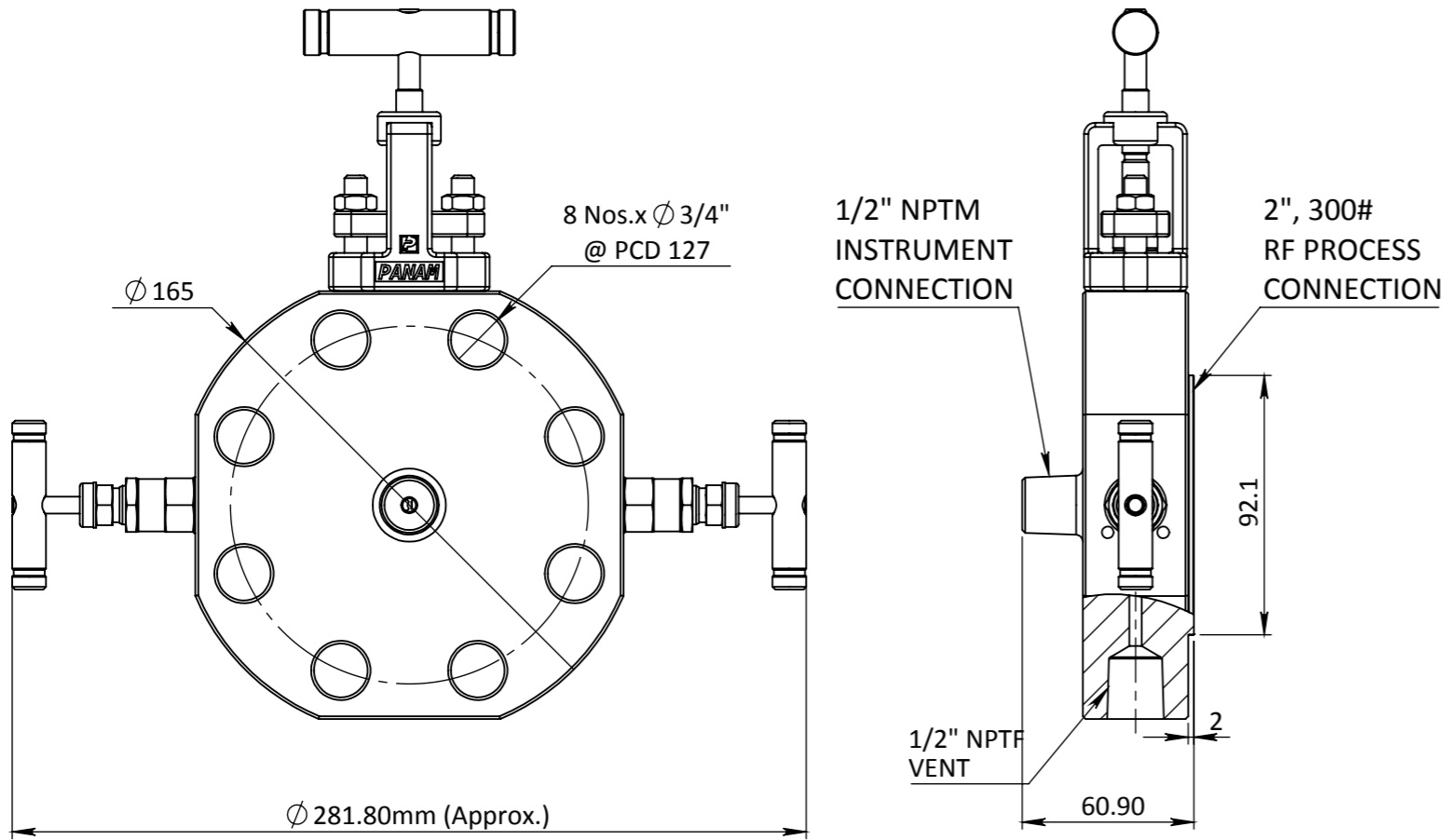


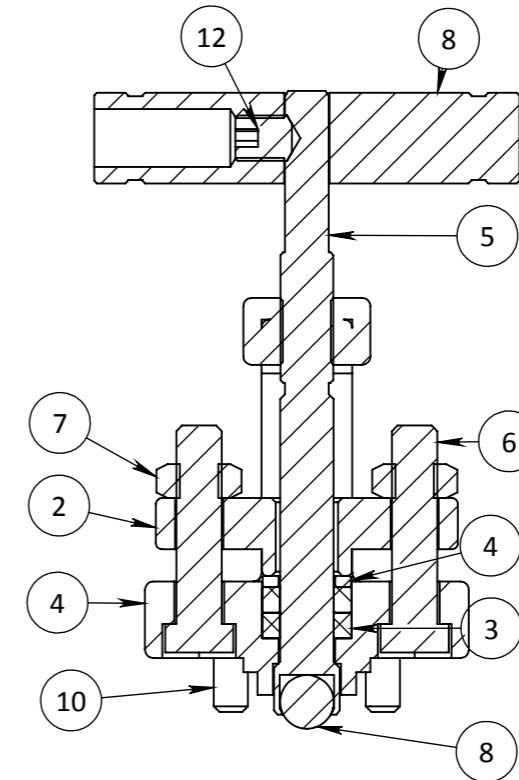
### BLEED VALVE



ITEM NO.	PART NUMBER	DESCRIPTION	QTY.
1	GLAND BODY	SS316	2
2	RETAINER	SS316	2
3	PACKING	DELTRIN	2
4	PACKING	TEFLON	4
5	WASHER	SS316	2
6	SPINDLE	SS316	2
7	LOCK NUT	SS316	2
8	DUST CAP	PLASTIC	2
9	WASHER	SS316	2
10	HANDLE	SS	2
11	GRUB SCREW	SS	2
12	BALL TIP	SS440S	1

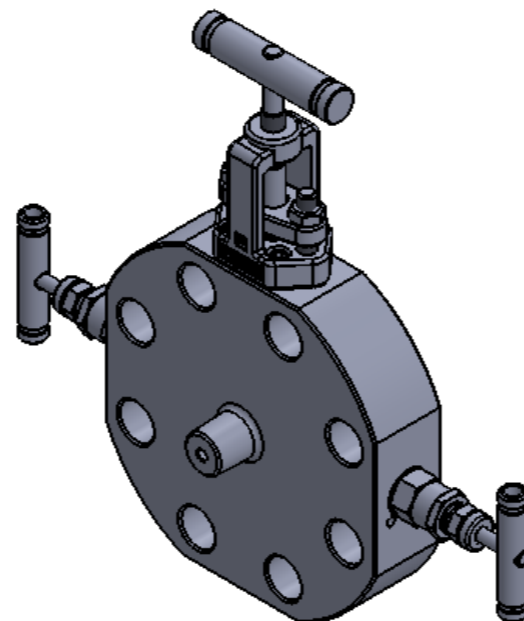
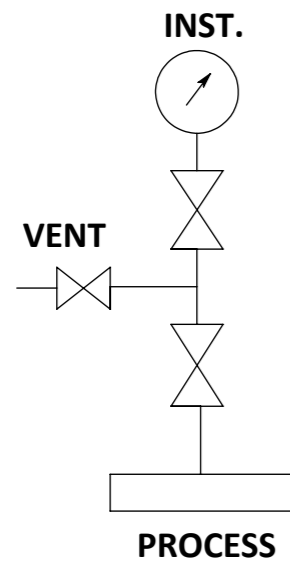
SECTION Q-Q

### ISOLATED VALVE



IT. NO.	PART NAME	MOC	QTY
01	GLAND BODY	CF8M	1
02	GLAND	SS316	1
03	PACKING 1	TEFLON	2
04	PACKING 2	SS316	1
05	SPINDLE	SS316	1
06	HEX BOLT	STD	2
07	HEX NUT	STD	2
08	HANDLE	SS	1
09	BALL	SS440C	1
10	ALLEN BOLT	STD	4
11	CHECK NUT	SS316	1
12	GRUB SCREW	SS	1

IT. NO.	PART NAME	MOC	QTY
01	BODY	SS316	1



**NOTES:-**

1. ALL DIMENSIONS ARE IN MM. UNLESS SPECIFIED.
2. UNSPECIFIED GEN TOL. : ±0.1 MM MAX.
3. UNSPECIFIED GEN ANG. TOL. : ±0.1 ° MAX.
3. UNSPECIFIED ASLY. TOL. : ±2MM MAX.
4. UNSPECIFIED TOL. FOR FORGING : ±2 MM.(IF APPLICABLE)

TITLE:- 2", 300#, RF , 1/2" NPTM INST. CONNECTION, 1/2" NPTF BLEED CONNECTION , BLOCK & BLEED VALVE

DRN.	PS	SCALE -	N.T.S	REV.	00
CHD.	SS	DATE -	18.07.18	PROJ.	
APPD.	DM	DRG.NO.-	PDBB-OSY-SS-01-50-300-RF-8NM-8N		



**PANAM ENGINEERS LTD**  
GUJARAT - INDIA

SHEET  
1  
OF  
1

REV.	DESCRIPTION	DRN	CHD	APPD	DATE