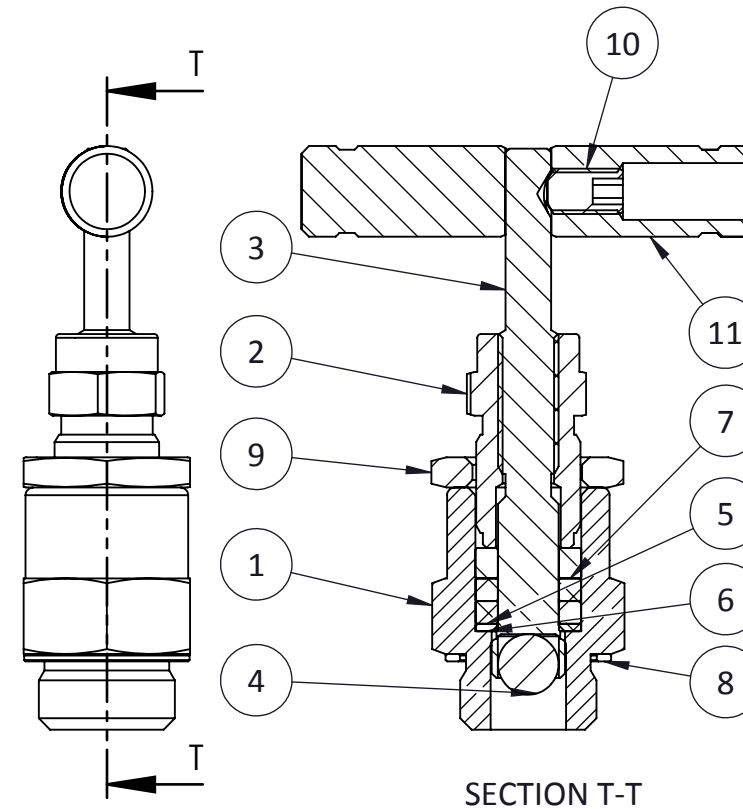
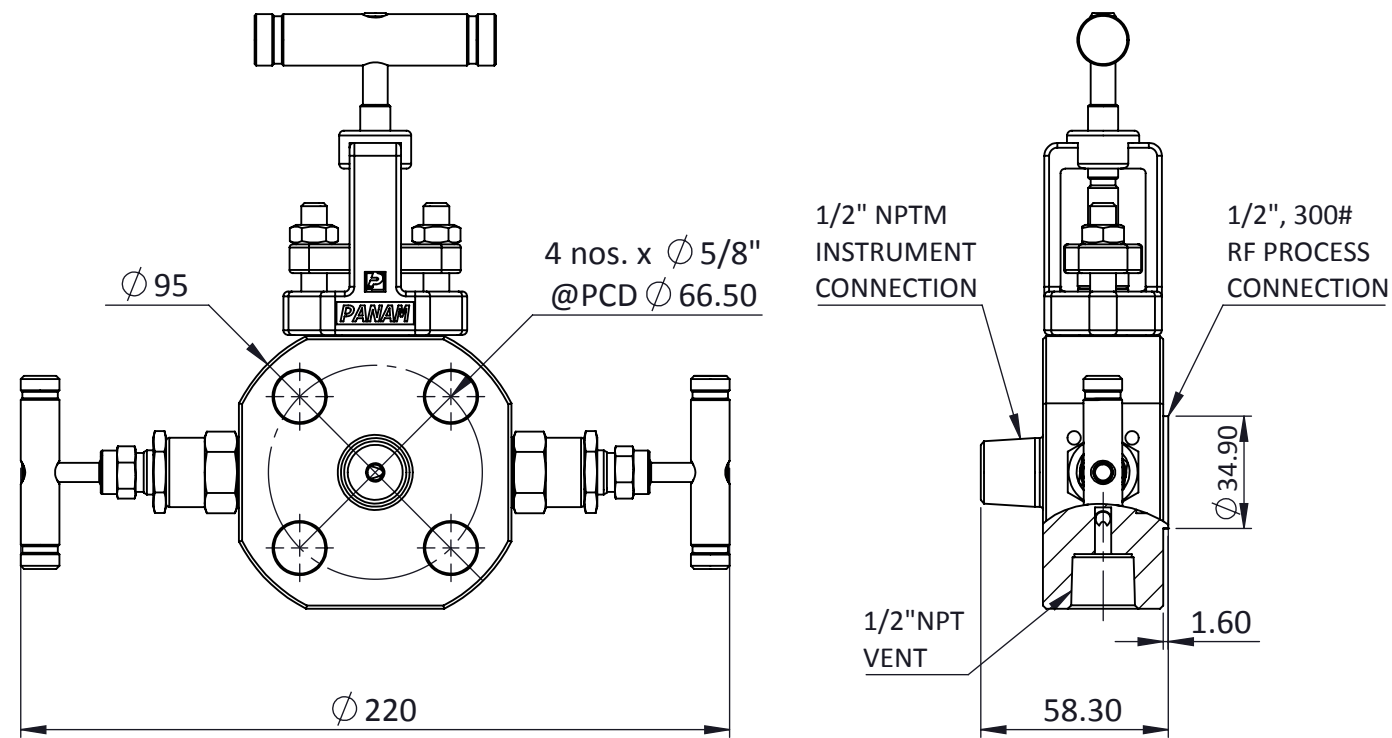
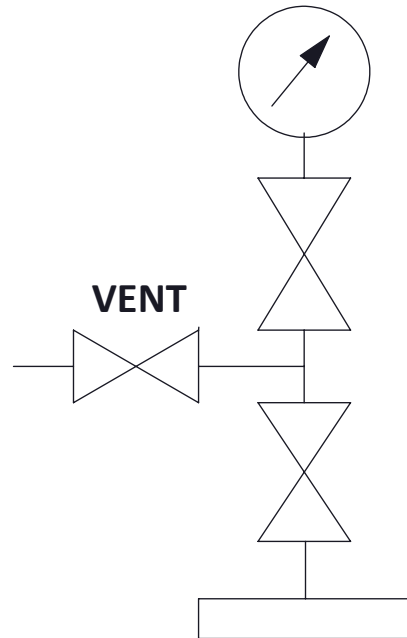


BLEED VALVE



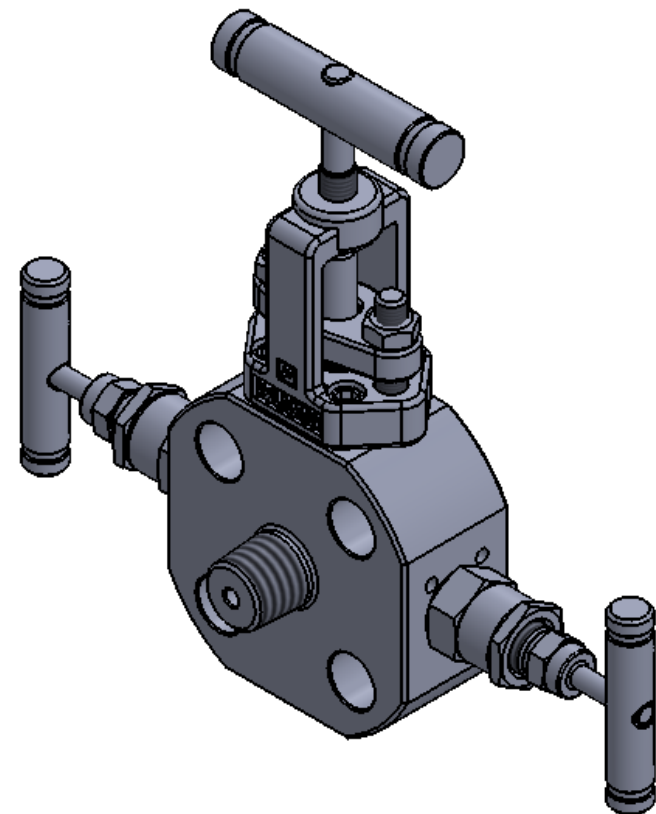
ITEM NO.	PART NUMBER	DESCRIPTION	QTY.
1	GLAND BODY	ASTM A 479-316	1
2	RETAINER	ASTM A 479-316	1
3	SPINDLE	ASTM A 479-316	1
4	BALL TIP	SS440C	1
5	PACKING	DELTRIN	2
6	PACKING	PTFE	1
7	WASHER	ASTM A 479-316	1
8	WASHER	ASTM A 479-316	1
9	LOCK NUT	ASTM A 479-316	1
10	GRUB SCREW	SS	1
11	HANDLE	SS	1

INSTRUMENT

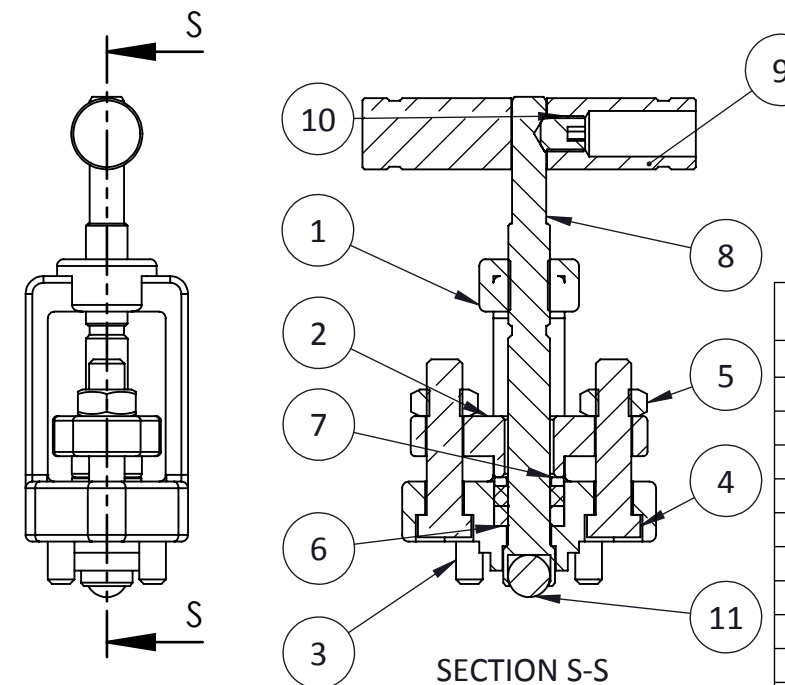


VENT

PROCESS



ISOLATION VALVE



ITEM NO.	PART NUMBER	DESCRIPTION	QTY.
1	BONNET	ASTM A 351 CF8M	1
2	GLAND BODY	ASTM A 351 CF8M	1
3	ALLEN BOLT	SS	4
4	HEX BOLT	ASTM A 193 GR B8M	2
5	HEX NUT	ASTM A 193 GR B8	2
6	PACKING	PEEK	2
7	WASHER	ASTM A 479-316	1
8	SPINDLE	ASTM A 479-316	1
9	HANDLE	SS	1
10	M8 GRUB SCREW	SS	1
11	BALL TIP	PTFE	1

NOTES:-

1. ALL DIMENSIONS ARE IN MM. UNLESS SPECIFIED.
2. UNSPECIFIED GEN TOL. : ±0.1 MM MAX.
3. UNSPECIFIED GEN ANG. TOL. : ±0.1° MAX.
4. UNSPECIFIED ASLY. TOL. : ±2MM MAX.
5. UNSPECIFIED TOL. FOR FORGING : ±2 MM.(IF APPLICABLE)

TITLE:- 1/2", 300# CLASS RF, 1/2" NPTM INSTRUMENT CONNECTION X 1/2"NPTF BLEED CONNECTION

DRN.	PS	SCALE -	N.T.S	REV.	00
CHD.	SS	DATE -	25.05.18	PROJ.	
APPD.	DM	DRG.NO.-	PDBB-OSY-SS-01-15-300-RF-8NF-8N-8NM		

REV.	DESCRIPTION	DRN	CHD	APPD	DATE



PANAM ENGINEERS LTD
GUJARAT - INDIA

SHEET
1
OF
1