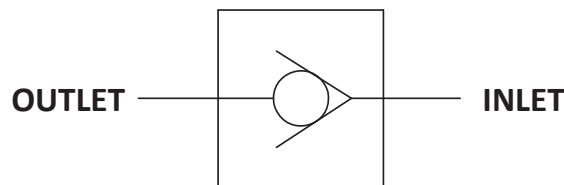
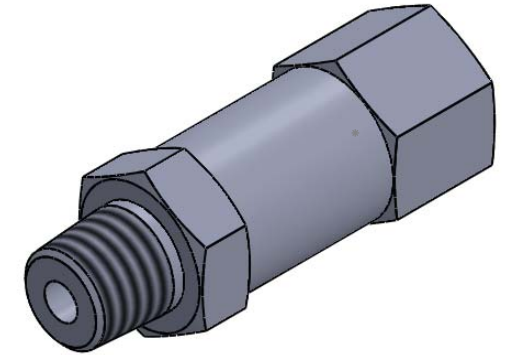
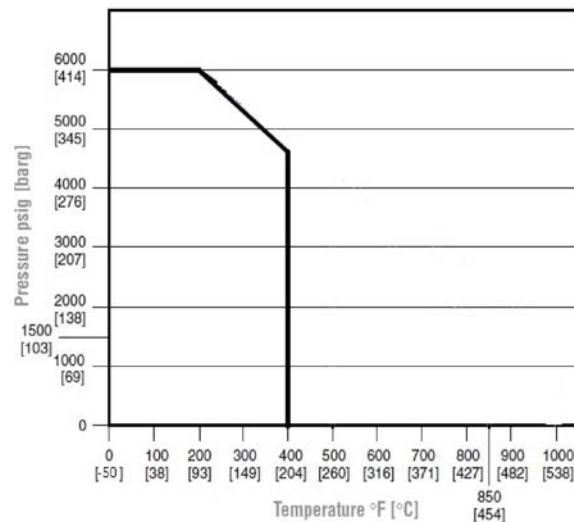


SECTION B-B



SCHMATIC



ITEM NO.	DESCRIPTION	MATERIAL	QTY.
1	BODY(inlet)	ASTM A 479-316	1
2	BODY(outlet)	ASTM A 479-316	1
3	SPRING	SPRING STEEL	1
4	POPPET	ASTM A 479-316	1
5	O-RING	VITON	1

TITLE:- CHECK VALVE, SS 316/NACE, 1/2"NPTF X 1/2" NPTM, 1/3"PSI CRACKING PRESSURE,6000 PSI

DRN.	PS	SCALE - N.T.S	REV.	00
CHD.	SS	DATE - 23.03.18	PROJ.	
APPD.	DM	DRG.NO.- PCV-S-08-FM-SG		

NOTES:-

- ALL DIMENSIONS ARE IN MM. UNLESS SPECIFIED.
- UNSPECIFIED GEN TOL. : ±0.5 MM MAX.
- UNSPECIFIED GEN ANG. TOL. : ±0.1° MAX.
- UNSPECIFIED ASLY. TOL. : ±2MM MAX.
- UNSPECIFIED TOL. FOR FORGING : ±2 MM.(IF APPLICABLE)

REV.	DESCRIPTION	DRN	CHD	APPD	DATE



**PANAM ENGINEERS LTD**  
GUJARAT - INDIA

SHEET  
1  
OF  
1